



Prospectus

# Connect Experience Achieve

## RNC - MORE THAN A COLLEGE!

Did you know that RNC is a charity as well as a residential FE college?

We rely heavily on grants from a range of trusts and foundations as well as individual donations including gifts in Wills.

This extra income ensures we can continue to provide a range of extra-curricular activities, the latest equipment such as IT and VI teaching aids, as well as keep improving our campus facilities for current and future students.

Recent grants have provided essential Covid-19 support and helped us completely refurbish the student gym.

If you can help, please contact our fundraising team via email [fund@rnc.ac.uk](mailto:fund@rnc.ac.uk) or scan the QR code with your phone to donate.



*Scan me to donate*

# Contents

---

<b>02</b>	Welcome	<b>40</b>	Business Studies
<b>03</b>	Vision and Mission Statements	<b>41</b>	Cisco Networking Academy
<b>04</b>	Why RNC?	<b>42</b>	English
<b>06</b>	The RNC Difference	<b>45</b>	Extended Project (EPQ)
<b>08</b>	Top 10 Reasons to Come to RNC	<b>46</b>	Health and Social Care
<b>10</b>	Funding	<b>47</b>	History
<b>12</b>	International Students	<b>48</b>	Home Cooking Skills
<b>13</b>	RNC's Placement Funding Advisor	<b>51</b>	IT - Information Technology
<b>14</b>	How to Apply	<b>53</b>	Massage and Complementary Therapies
<b>17</b>	Student Support Services	<b>55</b>	Mathematics
<b>23</b>	Something for Everyone	<b>56</b>	Modern Foreign Languages
<b>24</b>	thePoint4	<b>58</b>	Preparation for Higher Education
<b>26</b>	Your Future	<b>59</b>	Psychology
<b>29</b>	Our Courses	<b>60</b>	Sociology
<b>31</b>	ASPIRE Study Programme	<b>63</b>	Sports Academy
<b>35</b>	Audio Media Production	<b>65</b>	Sporting Excellence
<b>36</b>	Biology	<b>67</b>	Sport and Recreation
<b>37</b>	Braille	<b>68</b>	<b>Get in Touch</b>
<b>38</b>	Business and Administration		

# Welcome

RNC is a unique place. It's somewhere that you can learn to be yourself amongst a peer group who have similar life experiences. It's a place where you will be valued for who you are now, and for the person that you are becoming.

Our dedicated, specialist staff and superb facilities enable us to deliver our programmes with a focus on meeting your individual needs, both in and out of the classroom. We are a national centre of expertise for people with visual impairments, and our broad curriculum combines academic and vocational subjects with specialist skills for life to help you to prepare for the future. This means we can offer a programme of study that is tailored to you.

We focus on independent learning and living, making RNC somewhere that you can develop the skills and confidence to thrive not only while you are here, but in your life after College.

RNC is a community where diversity is celebrated and each student is treated as an individual. We understand that the journey to overcoming barriers to achieving personal aims is unique to each student. We will work with you to help you find your own path to the future.

This prospectus will provide you with more information about all that RNC has to offer, but I also strongly encourage you to visit us to hear about the College first hand, from our students.

**Lucy Proctor**  
Executive Principal



Here at RNC we are all about the importance of both our academic progress and our personal development - we are offered a variety of opportunities to achieve our unique potential.

The staff realise that, although we may all have a visual impairment, we are all individuals with different needs, ideas and plans. There definitely isn't an assumption of 'one size fits all', students are able to pursue their chosen courses without having to worry about whether it will be accessible.

At RNC, you will find that everyone is given a voice. One of the ways is via the Student Representative Group (SRG). This is a regular student-led meeting whereby new ideas are discussed, any concerns are raised and dealt with and student voices are heard. All students are welcome at these meetings and we have also attended national campaigning events to better the lives of people within the specialist education system.

The SRG has effective links with staff in order to ensure that any points raised in the meetings are carried forward.

**Abdul Eneser**  
Chair of the Student Representative Group



## Our Vision

A world where every person with a visual impairment has true equality

## Our Mission

Education, employment and empowerment for all people with a visual impairment

### Ofsted

RNC is proud to have achieved a 'Good' rating from Ofsted during its inspection in 2017.

☞ The large majority of students achieve their personal goals and make good or better progress from their starting points. Students develop skills that prepare them well for life after they leave the college. Last year, the large majority of students progressed on to employment, further or higher education or voluntary work. The number of students moving into paid employment has significantly increased. Students develop self-confidence, social skills and independent learning skills very effectively and are prepared well for their next steps. ☞

Os hoffech gael unrhyw o'r wybodaeth hon yn y Gymraeg, rhowch wybod i ni.

Each year RNC welcomes international students.

If you require any of the College's information in an alternative format or another language, please contact Student Enquiries.

01432 376 621  
[info@rnc.ac.uk](mailto:info@rnc.ac.uk)  
[www.rnc.ac.uk](http://www.rnc.ac.uk)

Statistics identified with a \* are taken from responses to the Student Satisfaction Survey 2019/20

# Why RNC?

The College experience is more than vocational and academic qualifications. It's about achievement beyond the classroom, a time when you start to develop the self-confidence, personal independence and communication skills you need for your next step. This is your journey for your future.

## Academic

Offering a range of subjects at Level 2 (GCSE, BTEC, NVQ, etc) and Level 3 (AS and A Levels, BTEC, ITEC, Cambridge Technical, etc) and with specialist teaching staff and small class sizes, RNC allows students wishing to pursue a more traditional college path the chance to shine. We encourage independent learning and do not have teaching assistants within our classes, enabling you to realise your potential and leave with a true sense of personal achievement.

## University preparation

In addition to excellent teaching, students benefit from a dedicated team who will guide you through your UCAS applications, support for university visits and informed talks from Higher Education professionals. Living at a residential college is great preparation for university life.

## Vocational

Our training programmes give you the practical skills and experience you need to follow specific career paths. At RNC we are proud of the range of qualified students who leave us and embark on careers in fitness, massage, business administration, technology and the media.

## Preparing for employment

Whichever path you choose, our team will guide you through CV writing and mock interviews to help you move into your future career. Being accomplished in your chosen medium of accessible technology, utilising time management practice and other independence skills will enable you to succeed within the workplace.

“ The curriculum meets the wide range of students' needs very effectively. All students study on full-time courses in small classes at entry level 1 to level 3. The curriculum includes academic qualifications such as GCSEs and A Levels in a good number of subjects, as well as vocational and specialist studies in fields such as information technology, business administration, sport and recreation, literacy, numeracy, home-cooking skills, Braille and personal and social development and transitional support. As a result, students develop their skills very well. ”

Ofsted 2017

# THE RNC KITCHEN



“  
From my first visit,  
I was treated as an  
adult and given the  
rights of an adult  
”

# The RNC Difference

Alongside your academic or vocational courses, you'll have the chance to learn essential skills that will be invaluable as you move into work or Higher Education.

## Independent Living Skills

Independent Living Skills provides a flexible programme that is tailored to build on your current skills and meet your future ambitions. Everything from money management to cookery skills, laundry to supermarket shopping, is covered, helping you to prepare for life as a confident, independent person. You may wish to embark on our self-catering scheme if you are planning to go to university or to live in your own home after RNC.

## Mobility Training

Mobility Training gives you the opportunity to attend regular one-to-one sessions where you can increase your skills whilst learning how to access the RNC campus and the local area. Confident spatial awareness and mobility skills are central to your independence; from learning to use a cane and independent train and bus travel, to guide dog support and advice.

## Functional English and Mathematics

Functional English and Mathematics lessons offer practical and relevant training to help you improve your skills, raise your confidence and support your study. A range of topics cover useful life-skills, including financial budgeting and letter writing, and will provide you with a qualification up to Level 2.

## Work Experience

During the College's annual work experience week, you will gain valuable, real-world experience of what life is really like in the workplace. You will have the chance to discover the type of role and environment that suits you through opportunities that are tailored to the career that interests you.

In addition to designated internal and external work experience, you will be able to take advantage of the regular work-based learning opportunities at RNC. Vocational courses have this as an active component, enabling you to gain skills for your future place of work.



# 100%

of students felt they got the support they needed to plan for what happens after College\*



Students tell us how life-changing it is being able to access their work in formats that suit their eye conditions. By providing a range of assistive technologies and alternative formats, we can give you the necessary tools to succeed and achieve your dreams independently.

## Braille

RNC is the only place in the UK to offer Braille as a qualification. Tuition is provided by experienced, specialist teachers on a one-to-one basis. Lessons are individually tailored to each student so that you learn at your own pace.

Further information can be found on Page 37.

## IT – Information Technology

IT gives independence back to a person who has been reliant on assistance or who has only recently lost their sight. So much of everyday life relies on our ability to use technology; increasingly, much of the information we need can only be accessed through electronic means. By having skills in assistive technology, a person with sight loss can easily access these materials.

At RNC we have a range of assistive technologies including:

- JAWS screen reader
- SuperNova screen reader and/or magnification
- ZoomText magnification

The programmes we offer are individualised. You will undertake a profiling activity which will enable us to work out a programme for you based around your current skills and needs.

## Braille Technology

Braille Technology is open to anyone who is studying Level 2 Braille or who already knows Level 2 Braille and just wants to discover how the different specialist technologies work. You can explore the devices in a couple of workshops or delve deeper and become adept at using the equipment over the course of a year.

Students are welcome to bring their own devices. For those who are new to Braille Technology, RNC has a range to try, from the latest BrailleNote Touch to Braille Displays that can be used with PCs, laptops and Apple products. Some benefits of using Braille Technology are: devices are quiet, easy to use, good for proof-reading, portable, and ideal for using in lecture halls at university or in the workplace. The range of technology available means you will always have an option available to you.



# Top 10 Reasons to Study With Us

---

## Expertise

Teaching staff are highly qualified, and experienced specialists in working with people with visual impairments and preparing accessible formats

## Individualised Programmes

Each student has their own unique timetable built around their specific learning needs. Flexible timetables allow for a wide range of learning opportunities

## Independent Learning

Students value the opportunity to learn without the support of teaching assistants. Having a secure working medium and being responsible for their own learning prepares students well for their next step

## Skills For Life

Every student increases their independence across all aspects of their life. Skills for life are developed alongside their programme. This includes personal and social development, IT, Braille, mobility and independent living skills

## Employability

The College is highly effective in developing self-confidence and social skills. Our work-based learning opportunities ensure that students receive the employment skills they need for getting a job in the future, whatever their chosen profession

# Top 10 Reasons to Study With Us

---

## Support Team

A variety of support teams, from residential and wellbeing to transition and employment, give students the best opportunity to thrive both socially and academically. 100% of students feel supported by staff\*

## Location

A small but lively city, with direct trains from London, Manchester, Birmingham and Cardiff, Hereford is safe and welcoming to people with visual impairments, having been home to the College since 1978

## Academic and Vocational

A wide range of courses to suit all students, from GCSEs and A Levels to industry standard vocational courses that are internationally recognised

## Opportunities

From work experience and community projects to organising events or being part of the UK's only VI Sports Academy, RNC provides outstanding opportunities that will make your time here memorable

## Progression

Students gain the qualifications, skills and confidence to successfully move on to Higher Education and employment. Independent living and participation in their communities are further key outcomes

# Funding

## Information for Students in England

### Education, Health and Care Plans (EHCPs)

EHCPs were introduced through the Children and Families Act (2014). They are available to young people up to the age of 25 who have special educational needs (SEN). All students who live in England and study at RNC have EHCPs. You may not have had an EHCP before, but may find that you do need one for your post-16 education, or because your needs have changed over time.

You have the right to request a needs assessment for an EHCP, or can ask for this to be done on your behalf, including by your current school or college. It can take up to 20 weeks from your first request to you receiving an EHCP, if the local authority agrees that you need one. There are lots of steps along the way, and we can provide more specific information on this.

The key points are:

- your views and wishes should be at the heart of everything
- the EHCP should include the full range of your needs, but also your strengths
- the EHCP should emphasise the outcomes you seek to achieve, and what support you will need to do this
- it should be written in plain language, without jargon, so you can understand everything

You can request that a specific provider - such as RNC - is named in your EHCP. If this is agreed, we will work together with your local authority to make sure that all of your needs are met, and you achieve the outcomes detailed in your EHCP.

Your local authority will have a 'local offer', which will include the different provision that is available

to you. You may find that RNC is not included in the local offer because of our location, but you can still request a placement here.

Your local authority will also be able to signpost you to independent advice and guidance about EHCPs and the local offer. There are also lots of independent sources of advice, including charities and advocacy groups. If you would like information on any of these, or to speak to one of our team about the EHCP process, contact us on 01432 376 621 or email [info@rnc.ac.uk](mailto:info@rnc.ac.uk)

### Information for Students in Wales

The Welsh Government is introducing a new system of Individual Development Plans (IDPs) which will replace Statements of Special Educational Needs and Individual Education Plans (IEP) for students with Additional Learning Needs (ALN), formerly known as special educational needs or learning difficulties/disabilities.

IDPs will be available to all young people with ALN up to the age of 25, if they need one in order to complete their education (not Higher Education). A young person may be considered to have ALN if they require support that is 'different or additional to that provided as part of the usual or differentiated curriculum.' ALN will therefore cover a very wide range of needs, including visual impairment.

The IDP will not only cover your educational needs, but also any relevant health or social care needs. It will be a flexible document, that will be reviewed and updated as your needs and ambitions change over time. Once your ALN have been described, Additional Learning Provision will be made available to meet those needs.

If you currently have a statement or an IEP you will be entitled to an IDP, as long as you are in education and are under the age of 25. If you have not previously been identified as having ALN, you

can speak to your school or college, or go directly to your local authority to request one.

Within a school or college, the process of securing an IDP will be led by an Additional Learning Needs Co-ordinator (ALNCo), who will work together with you, your family and expert professionals to create a document which reflects your needs and personality. Where a school or college produces the IDP they will have 35 days to complete the process. If your local authority produces it, they will have 12 weeks to do so (this is reduced to seven weeks if the local authority is reviewing the decision of a school or college rather than initiating the process). If your ALN cannot be met in your local school or college, your local authority will lead on the IDP and you will be able to discuss the possibility of a placement at RNC with them.

The Welsh Government's aim in introducing this system is to put you at the heart of everything that happens, for your views to be taken into account at every stage, and for decisions to be taken locally by people who are familiar with your needs. Careers Wales will continue to provide independent careers advice, including advising you on your post 16 options.

If you would like advice on how to approach your local authority, or to speak to one of our team about the IDP process, contact us on 01432 376 621 or email [info@rnc.ac.uk](mailto:info@rnc.ac.uk)

### Information for Students in Scotland

Visit [www.enquire.org.uk](http://www.enquire.org.uk) for information on support in Scotland.

### Information for Students in Northern Ireland

[www.nidirect.gov.uk](http://www.nidirect.gov.uk) provides detailed information about what is available for young people with special educational needs in Northern Ireland.

### Private Students

Students who are not eligible for funding from their local authority may wish to consider studying privately at RNC.

If you are considering funding your own placement, you can choose from any of the courses that we offer, subject to your current level of skills and experience. We would also encourage you to come and visit us to get a better understanding of what we can offer.

If you think RNC is right for you, the next step is to complete our application form. We will then book you in for a detailed Pre-Entry Assessment. This is an opportunity to meet the tutors and support team who you would be working with and to ask any questions you may have, as well as for us to assess your suitability for the course.

If the Pre-Entry Assessment shows that RNC would be a good match for you, we will then be able to make you a formal offer. This will be personalised to your own requirements and in addition to your chosen course will include any mobility training, independence support and general IT needs you may have.

At this stage we will also be able to confirm the exact cost of your programme and discuss a possible start date.

The costs will include accommodation and meals, although some students who are local to RNC choose to attend daily, depending on their existing mobility and independence skills.

If you think you may be interested in funding yourself to study at RNC contact our Student Recruitment Team for an initial chat and to arrange a tour.

# International Students

We are delighted to welcome students drawn by our international standing as outstanding providers of specialist education and in recent years we have been joined by students from countries as varied as Norway, Qatar, Nigeria and Saudi Arabia.

Unlike many specialist independent schools in the UK, RNC can offer a unique blend of college education, specialist provision and preparation for university, employment and independence.

RNC offers:

- help with English language learning
- tailored courses and programmes following the English national curriculum to suit every individual
- one-to-one assistance in independent living skills
- a homely environment in one of the country's most picturesque small cities
- a wide range of extra-curricular activities
- first class sporting facilities and training
- mobility and orientation training
- 24 hour residential staff on site

## Application and Funding

Complete the application for RNC and advise us how you intend to fund your placement.

In order to study at RNC, international students must have their own funding in place.

This can mean paying privately or securing sponsorship from your government or an employer.

**We are unable to subsidise your place by providing any funding ourselves and do not offer a scholarship programme.**

You will be invited for an initial interview online via Skype/Zoom/Teams. Our team will then arrange an in-depth virtual Pre-Entry Assessment.

## Pre-Entry Assessment

The Pre-Entry Assessment will consist of a series of meetings with key members of our staff including our teachers. You will also be expected to undertake a literacy and numeracy test.

During the process we will be able to establish the best way that we can support you and it will also give you the opportunity to ask lots of questions about RNC.

## RNC Offer Letter

Once the assessment is complete, if we are able to offer you a place we will confirm the full cost and proposed start date and provide this information in writing for the benefit of the authorities in your home country and any sponsors.

Because your programme will be tailored to meet your personal needs we cannot confirm the cost before this stage, although we can provide a general indication of likely fees on request.

Three months prior to the start of your course we will issue you with a confirmation of acceptance for studies (CAS).

You will be required to apply for your visa in your home country.

# RNC's Placement Funding Advisor

## Maria McMaster is RNC's Placement Funding Advisor

My role is primarily an advisory one. I work with potential students and their parents to help them navigate their way through the often complex and lengthy process of trying to secure local authority funding to attend RNC.

I give information, advice and guidance around SEN law and the associated statutory duties all local authorities must follow with respect to that law and its regulations.

I work with prospective students and their parents to help them identify and gather the best and most relevant evidence that will support them in their efforts and in their communications with their local authority. I also help them to have effective communications with their local authority officers.

I offer guidance and support to those just starting out on their path to get a local authority educational needs assessment; to those securing an educational plan; and to those who already have an educational plan.

Although I work more closely with English students and the English funding system, I can still offer some degree of advice and guidance to students from Wales, Scotland and Northern Ireland.

I have a background in advocacy in both Health and Education. I have worked in SEN advocacy and advice since 2014 and have worked within the field of visual impairment since joining RNC in 2019.



# How to Apply

---

## Start Looking Ahead

It's never too early to explore your options for Further Education and to gather information about the courses that will help you achieve your ambitions. Our website ([www.rnc.ac.uk](http://www.rnc.ac.uk)) has lots of information, including more detail on our academic and vocational programmes.

---

## Visit RNC

An informal visit is by far the best way to experience what RNC has to offer. A tour of the College will allow you and your family the time and space needed to ask questions, speak to staff and students, experience our outstanding accommodation and get a feel for campus living. You may also choose to come on one of our free Have a Go weekends, which give you a taster of life at RNC with lots of fun and games thrown in!

---

## Contact Your Careers Adviser

Speak to the Careers Adviser in your school or local careers centre who will help you look into your options for post-16 education and training. One possibility is specialist residential education like that offered at RNC. Your adviser will be able to help you with making an application, but please do not hesitate to contact us for additional support and information.

---

## Discuss Your Options

Talk through your choices with those closest to you. If you need further advice, please call our Student Enquiries team who will answer any questions or send you an application form. Alternatively, you can download an application form from our website or complete the online application form at [www.rnc.ac.uk](http://www.rnc.ac.uk) Once you have applied, our Registry team will get in touch and support you through the process.

---

## Funding Advice

Funding is available from your local authority for your place at RNC. The process can be long and challenging but we have experienced staff on hand to offer advice and support throughout.



## Pre-Entry Assessment

All potential students are invited for a Pre-Entry Assessment (PEA). This is a two-way process. It gives us an opportunity to get to know your strengths, interests and support needs. It gives you an opportunity to meet staff and students and decide whether we can offer what you want. For more information on PEAs and the funding process please visit the Student Journey pages of our website [www.rnc.ac.uk](http://www.rnc.ac.uk)

## Start Your Programme!

As you settle into life at RNC, our experienced staff are on hand to ensure you receive all the support you need while you live and study away from home.

**» Teachers and support staff provide highly effective support for students so that they can engage fully in a wide range of learning activities, and are well prepared for their next step. »**

Ofsted 2017

## New Student Conference

Once you have an offer of a place at RNC you are invited to join all other new students at a weekend conference for both you and your parents or guardians. Taking place in July each year, it is a great opportunity to meet fellow new starters and familiarise yourself with your surroundings.

*Scan me  
to view  
a short film*





# Student Support Services

## Tutor Groups

All students are assigned a tutor who will optimise their College experience. Your tutor will support and monitor your academic and personal development, and encourage forward planning to ensure positive transitional outcomes. You will be regularly advised to review and reflect on your progress and consider how to make certain your career and personal goals are met. Tutorials are also an opportunity for group discussions related to College events, community activities and national and worldwide current affairs.

## Transition

All students receive transitional support. You will attend career development classes, which are small group sessions concentrating on individual career planning and preparation for the world of paid work, apprenticeships, volunteering, and Higher Education. You will learn how to write a CV and supporting statement, and practice your job interview skills.

All students complete a minimum of a week-long work experience placement each year. You may also attend regular placements provided by local employers, or internal/external work-based learning projects, where you can further develop your employability skills.

You will have fortnightly sessions with an Employment/IAG Adviser, access to the National Careers Service and talks from guest speakers to support you in planning your future. Assistance is also provided if you are applying to university.



## Residential Living

On campus there are halls of residence designed to suit different age groups. Campbell and Dowdell Halls host under 18 year olds, with students aged 18 to 25 in Stephens Hall. Stephens Hall has a number of self contained flats. The flats have their own kitchen and living areas and provide the opportunity for you to experience an increased level of independent living.

## Residential Support

Our team of Residential Support Officers and Wellbeing Support Officers provide a point of contact for students in each of the halls. They ensure that moving away from home and living more independently is a smooth and exciting process for you.

As part of our commitment to safeguarding our students' welfare, waking night staff ensure that students are safe 24/7.

 **Students feel safe and know how to stay safe online. They are confident about talking to staff about concerns and know how to keep safe in College and at work. One student who is a member of the safeguarding and 'Prevent' committee said: 'the College is a very safe place to be, help is available even if you need help at two o'clock in the morning. **

Ofsted 2017



# Student Support Services

Continued >>

## Health and Wellbeing

RNC has a medical centre on site which provides the following services:

A team of registered nurses based on campus to provide daily support and advice on managing your individual healthcare needs. The nursing team can also support you to access local NHS medical provision while you are studying at RNC and will liaise with relevant parents/guardians and professionals as appropriate.

On campus we have a BACP accredited Counsellor. You can be referred for counselling via Pre-Entry Assessment or you may access the counselling service during your time at College. The Counsellor has long term experience of supporting young people within education and also with emotional adjustments relating to sight loss.

## Meals

Lunch and evening meals are provided at the RNC Kitchen. Our bistro-style eatery offers an extensive menu and caters for all dietary requirements.

At some point you may wish to progress to a full or partial self-catered arrangement. This may be done using the shared kitchens on each floor of the halls of residence. Stephens Hall also contains some self-catered flats (comprising an en-suite bedroom, small kitchen and living area); these are particularly useful for students going to university or thinking of living independently.

## Multi-faith Provision

People of all faiths are welcomed to the College community. Religious and cultural support is provided and links are established with local provision wherever possible. Students are enabled

to access local places of worship and can discuss any individual prayer or dietary requirements with support staff.

There is a multi-faith prayer and reflection room which is available to all staff and students who would like space for prayers or quiet contemplation.

## Student Voice

Students are encouraged to be active participants in the running of the College. All students are invited to be a part of the Student Representative Group.

Representatives are nominated from the student body for the following groups:

- Safeguarding Committee
- Equality, Diversity and Inclusion Steering Group
- Health and Safety Committee
- Education and Skills Quality Assurance Committee (ESQAC)

We also have a group of Student Ambassadors and an annually elected Student Governor who attends meetings of the Board of Trustees.

## Student Life

Everything we do is designed to develop your self-confidence. Building self-esteem and gaining practical experience will help you as you progress towards employment, self-employment or Further/ Higher Education. Social events and clubs are a large part of this. Whilst we provide many activities, students are encouraged to start up their own clubs, based on their interests.

## Student Bar

A student group runs the bar, welcoming all to enjoy the evening entertainments. Alcohol is only available to over 18s, but there is a range of soft drinks for

# Student Support Services

Continued >>

those under age or those who do not wish to drink. Fun, sociable activities take place weekly, with student DJs, karaoke nights, and fundraising events put on by fellow students.

## Local Shops

As well as learning routes around campus, the Mobility team will help you negotiate your way to the nearest shops, which include two convenience stores, a post office, a hairdresser and a chip shop.

## Entertainment Off-campus

Students are not restricted to the campus. The nearby city centre has a range of shops, cafés, bars and restaurants, as well as a cinema, theatre, swimming pool and bowling alley. Offering the best of both worlds, there are parks close to town and the countryside is just a short walk away. Major cities are easily accessible by train, with Cardiff, Bristol and Birmingham all less than 90 minutes away.









# Something for Everyone

## Duke of Edinburgh's Award

The Duke of Edinburgh's Award scheme is the world's leading youth achievement award. A fun adventure and a major challenge, we offer two progressive award levels of Bronze and Silver. This will push your boundaries as you develop lifelong friendships, gain new skills and enhance your CV and university applications by going that extra mile. RNC is a licensed centre for the Duke of Edinburgh's Award scheme which is run by experienced and qualified staff and can be adapted so is accessible for all students at RNC.

## Sports

For many students, attending RNC is their first opportunity to fully participate in sports. There are a variety of activities on offer, from boccia to virtual golf, tandem cycling to angling. Students can engage with individual or team sports (like VI cricket) in a fun and inclusive way.

Where we don't have the facilities on site, we can support you to access them locally. For example, rock climbing, swimming and athletics.

## Leisure and Learning Options

Within your weekly timetable, there are opportunities to engage in interests that are not central to your chosen courses. You may wish to try out a new sport, indulge in the arts or learn a language. Current activities are:

- Art
- French conversation
- Football
- Goalball
- Gym
- Horticulture
- Music
- Radio
- Spanish conversation
- Tech Novice Café



# thePoint4

**At RNC, we like to offer you something different. Enhancing a variety of the courses that you can choose from, we have a public leisure facility that offers unique work experience opportunities on site.**

thePoint4 is a fully accessible, international standard sports centre which has hosted many large events, including the Blind Football World Championships in 2010 and the Blind Football European Championships in 2015. thePoint4 is open to the community, who attend exercise classes and use the gym, sports hall and astro pitch facilities.

Students can take advantage of these facilities for their personal use, yet they also provide valuable work placement opportunities. So if you are interested in catering, you can work on the Pod. This is our public cafe. It gives you the chance to work with our catering partners Baxter Storey.

For anyone wanting to develop customer service skills, thePoint4 reception is a busy hub with a constant stream of customers and telephone enquiries to deal with.

If you are a student on one of the Sport and Recreation courses, you will get the chance to practice your developing skills on members of the public. Personal trainers work with clients in the public gym and group exercise classes are run during term time by students for members and non-members alike.

As a Massage and Complementary Therapies student, you will also provide a weekly sports massage clinic, giving you valuable work experience and contributing to thePoint4 community.





# Your Future



☞ In addition to my studies at RNC I also received mobility and independent living skills training and worked with the Transitions Team to gain further skills and knowledge to help boost my confidence when searching for further education and employment.

After leaving College, I took the opportunity to work with the NHS volunteer service. My role was to be a check in and chat responder. Every day was a different day and every person had a unique story to tell. I spoke to many individuals from different backgrounds and abilities. Alongside my voluntary work I also undertook a teaching qualification.

Juggling my studies and my voluntary work wasn't an easy task but all of the effort, hard work and determination has eventually paid off and I have been accepted for a teaching role which commences in September 2021.

**1 Year One**  
Amirah Ali

**Studied:**  
Audio Media Production, Braille, Business Administration, Health and Social Care, IT, Mathematics, Performing Arts

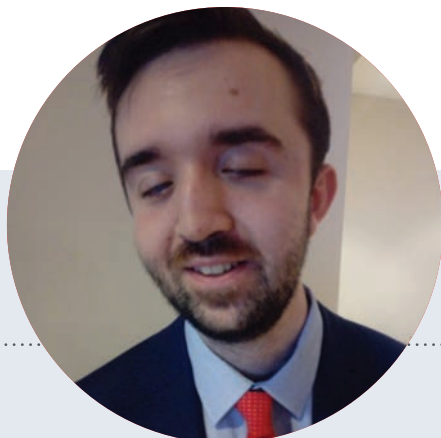
**Eye condition:**  
Leber's Amaurosis, Nystagmus

I have also started to turn my hobby of crafting into a professional passion. I now create canvases with kaleidoscope effects. I work alongside a small team to ensure that my passion is turned into reality.

When I was young, my passion had always been in the world of art and crafts. I feel that I have now turned this into something that is unique and enjoyable.

I would advise any future students to never give up on your dreams and aspirations. You are the artist of your life, so don't give your paintbrush to anyone else. ☞☞





## 2 Years On

Robert Cummings

### Studied:

Braille, IT and Cisco Networking Academy

### Eye conditions:

Corneal Opacity, Glaucoma,  
Bilateral Aniridia

Early in 2021, Robert took up a post with the RNIB where he is auditing websites to ensure they are accessible and comply with internationally recognised accessibility guidelines.

☞ After leaving RNC I took up a position with the Thomas Pocklington Trust (TPT) as their Technology Information Intern. My responsibilities varied from handling internal and external enquiries relating to accessibility, co-hosting webinars and producing content on accessible technology for different audiences.

One of the best bits about studying at RNC was knowing that everything would be as accessible as possible and that I would not have the stress of battling for materials to be made available in alternative formats, giving me more time to focus on my studies. ☞



## 5 Years On

Charlotte Milburn

### Studied:

Performing Arts, Mathematics, Psychology, Braille

### Eye conditions:

Bilateral Coloboma, Nystagmus,  
Photophobia, Astigmatism

In 2021, Charlotte completed her third year at York St John University studying Education Studies with Special Educational Needs and Inclusion and is now job searching.

☞ During my time at RNC I really made the most of the Careers and Transitions support. I focused on preparation for Higher Education. We had mock university interviews and job interviews among other activities to help get us thinking.

I undertook work placements at Look-UK doing administration and planning and with a Hereford-based dance teacher, Laura Gale, who was teaching in schools.

The work placements really helped change my perspective on employment and work. Before this I didn't really know what I wanted to do. These experiences enabled me to find the pathway I wanted to follow.

I would say take every opportunity that is offered whether it's a mock interview, CV writing or volunteering. Everything will benefit you in the long run. You are only going to improve from it and it is something you can add to your skill set. ☞



100%

of students feel that the College encourages them to look after their physical health\*

# Courses

---

31	ASPIRE Study Programme
35	Audio Media Production
36	Biology
37	Braille
38	Business and Administration
40	Business Studies
41	Cisco Networking Academy
42	English
45	Extended Project (EPQ)
46	Health and Social Care
47	History
48	Home Cooking Skills
51	IT - Information Technology
53	Massage and Complementary Therapies
55	Mathematics
56	Modern Foreign Languages
58	Preparation for Higher Education
59	Psychology
60	Sociology
63	Sports Academy
65	Sporting Excellence
67	Sport and Recreation

All of our ASPIRE activities were delivered throughout lock down (except practical woodwork skills). Where a practical session was not possible, staff embedded theory and provided students with materials to work from home.



# ASPIRE Study Programme

(Achievement for Social, Personal and Independence, Responsibility for future Employment and/or Education)

## Course Breakdown

### Qualification Level

You will study towards BTEC Level 1 introductory qualifications at Award, Certificate or Diploma level.

You will have the opportunity to undertake an Award or Certificate in Vocational Studies in the first year, alongside optional units in your areas of interest which you may progress towards in following years.

All students study core units such as 'Being Organised', 'Developing a Personal Progression Plan' or 'Working Together' and 'Researching a Topic'. You can then choose from a range of sector units to build your portfolio of qualifications such as: Art and Crafts, Business, Childcare, Cookery, Health and Social Care, Media, Performing Arts and Woodwork.

### Duration of programme

1-3 years, dependent upon qualification and individual circumstances.

### Entry Requirements

There are no formal entry requirements for this course but suitability will be discussed at your Pre-Entry Assessment.

## Course Information

The ASPIRE study programme embeds important skills linked to the Duke of Edinburgh's Award scheme, as these values help us to build a confident, supportive and resilient team through:

- communication with others
- working in a team
- taking the lead when required
- managing time effectively
- showing initiative and drive
- keeping a commitment
- taking responsibility
- being resilient despite knockbacks
- keeping focused and positive
- problem-solving, decision-making and dealing with the consequences.

Some of the activities you may complete within the ASPIRE programme are (*\*new for 2021/22*):

- learning a new skill such as French, German, gardening or going to the gym.
- sharing a hobby or interest with others within practical, work-based skills sessions.
- completing a performance to deliver internally or externally to a chosen audience, either face-to-face or online.
- studying children and young people and engaging with work experience activities to develop confidence in this area.



# ASPIRE Study Programme

Continued >>

- weekly experience on the RNC market stall (counter set up, display, customer service, cash handling).
- taking part in VI awareness events and research to share knowledge with local communities such as local and national primary schools, FE colleges, universities and residential homes.
- 'Bake-Off' style cookery projects to build confidence with cooking and health and safety within the kitchen.
- on-site catering practice, both in the student Bistro and the public Coffee Pod (front of house duties, selling products and engaging in customer service practice).
- arts and crafts activities, making products to sell or showcase; external project links with national art opportunities (woodwork, jewellery-making, painting, clay work).
- working within a gym environment (dealing with clients, upholding health and safety practices).
- joining the College's Eco-Committee to practise environmental projects that benefit both RNC and local communities.
- business office activities, that include practical office work within our RNC Working Office (photocopying, ring-binding, shredding, portfolio collation, stationery orders and meeting staff requests, creating presentations and visual displays, supporting internal and external events).
- \*Media supporting 'behind the scenes' with media-linked activities for the Performing Arts group.

- \*Bushcraft skills.
- \*Forest School linking to the Child Studies group.
- \*environmental projects such as wildlife garden, protecting bees, wildlife and insects in the College's orchard.

All of these opportunities will embed vital core skills such as Functional English and Mathematics and communication and problem solving skills.

## Progression Opportunities

You may progress from the Award or Certificate in Level 1 in your first year with a view to joining a Certificate or Diploma in your chosen sector area in years 2 and 3.

You will be encouraged to progress towards a regular work-based learning placement, either internally or externally in your second year.

Once you have achieved Distinction grades within your Level 1 Diploma in chosen sector areas, you have demonstrated that you are confident to progress towards a Level 2 vocational programme.

Upon completing the ASPIRE course, and having explored your interests and potential with support from specialist staff at RNC, you could move into paid, supported or voluntary work and independent living in your home area.



# Audio Media Production

---

## Course Breakdown

### Qualification Level:

NCFE Level 2 Certificate in Music Technology

NCFE Level 2 Certificate in Radio Production

RSL Level 3 Certificate/Subsidiary Diploma in the Creative Music Industry

### Duration of programme:

1 year for NCFE Level 2

2 years for RSL Level 3

### Entry Requirements:

An interest in the creation of music and radio products and their production is essential. Level 3 qualifications require 5 GCSEs (or equivalent) at grade C (grade 4) or above. These must include English and Mathematics.

## Course Information

Our Audio Media Production courses cover a range of skills that could help to prepare you for a variety of jobs. Through practical projects you can explore sound engineering, music production, radio production and sound design.

Throughout each course you will gain the skills you need to be able to use professional audio equipment, and the opportunity to experience applying those skills creatively in a variety of different situations. Working with other people as part of a team, communicating with musicians and performers, working to deadlines, gaining technical skills and building a portfolio of work are all essential parts of a career in this industry.

The courses are employment focused and work-based learning is an important element in the Level 3 timetable, along with teaching sessions that are delivered in classrooms equipped with professional digital audio and radio software and hardware.

Evidence for the qualification will be presented through a portfolio of work, which you will keep updated with audio clips, pictures, video and written evaluations of what you have done.

---

## Progression Opportunities

NCFE Level 2 students may progress onto a Level 3 course or into employment.

After studying RSL Level 3, you may go on to Higher Education, studying degrees in Media and Audio Production. You may also enter employment or choose an apprenticeship, for instance, the BBC Apprenticeship Scheme.

# Biology

---

## Course Breakdown

### Qualification Level:

AS Level (Level 3)

A Level (Level 3) plus  
Practical Endorsement

### Duration of programme:

1 year for AS Level

2 years for A Level

AS and A Level are separate qualifications but are taught alongside each other for the first year. This gives AS students the opportunity to switch to the full A Level if they are ready.

The Practical Endorsement is assessed separately to the A Level and this is done during lesson time.

### Entry Requirements:

You should have 5 GCSEs (or equivalent) at grade 4 or above including Science and Mathematics (at grade 5 or above).

## Course Information

The course is divided into topics, where each one covers a key concept of Biology. You will develop essential knowledge and understanding of different areas of the subject and how they relate to each other.

The AS and A Level Year 1 for OCR Biology cover the same modules:

- Development of Practical Skills in Biology
- Foundations in Biology
- Exchange and Transport
- Biodiversity, Evolution and Disease

In Year 2 (A Level only), the Year 1 subjects are reviewed and further modules are studied:

- Communication, Homeostasis and Energy
- Genetics and Ecosystems

Please note, at least 10% of the examinations are Mathematics-based questions at a level higher than GCSE.

---

## Progression Opportunities

A Level students may go on to Higher Education, often studying Biology or other sciences, progressing into employment or research-based higher levels of study.

# Braille

---

## Course Breakdown

### Qualification Level:

We are proud to be the only organisation in the UK to offer accredited BTEC qualifications in Braille

BTEC Level 1 Award in Uncontracted Braille for Touch Readers or Sight Readers

BTEC Level 2 Certificate in Contracted Braille for Touch Readers or Sight Readers

BTEC Level 3 Award in Applied Contracted Braille for Touch Readers or Sight Readers

**Please note, these are recognised BTEC qualifications, however, they are not regulated by Ofqual or any other regulatory body.**

### Duration of programme:

Dependent upon qualification and individual ability.

### Entry Requirements:

Level 1 (Uncontracted)

No qualifications or previous knowledge of Braille are required.

Level 2 (Contracted)

You will need to be able to read and write uncontracted Braille.

Level 3

You will need to be fluent and accurate when reading and writing contracted Braille.

## Course Information

### Level 1

Learning uncontracted Braille gives you the opportunity to develop the touch-reading and writing skills needed to recognise and produce the letters of the alphabet, full stop, capital letter sign and numbers. At the completion of the course you will also be able to produce Braille labels which will enhance your independence.

### Level 2

Learning contracted Braille is an essential skill for those with a visual impairment or a deteriorating eye condition. Being able to read and write contracted Braille restores confidence and self-esteem by providing you with an alternative and/or additional reading, writing and study medium.

### Level 3

This qualification enables you to become familiar with the more complex rules that govern the contracted Braille code and provides practice in the correct application of these rules. It focuses on the development of proofreading skills and the ability to produce accurate, correctly formatted written work.

---

## Progression Opportunities

Braille enhances independence when progressing to Higher Education or future employment, empowering people with a visual impairment to compete and succeed in the sighted world.

# Business and Administration

---

## Course Breakdown

### Qualification Level

NVQ Level 2 Award/Certificate/Diploma

### Duration of programme

1-3 years, dependent on the individual.

### Entry Requirements

An interest in business and administrative skills is essential.

## Course Information

This qualification is designed to prepare you for work in a business and administrative role, gaining theoretical knowledge and understanding along with performing a wide range of general administrative tasks through working in a real office environment (RNC Office Services). You will work on commissions received from internal departments and external organisations, which allow you to develop your skills and deliver quality products and services to deadlines.

This is a flexible qualification that can be tailored to meet your individual needs. You can choose from a range of units that will meet both your needs and those of prospective employers.

Units studied may include the following:

- Communicating in a business environment
- Making and receiving telephone calls
- Meeting and welcoming visitors
- Using a filing system and archiving information
- Using office equipment
- Solving business problems
- Using email and word processing software
- Research information
- Organising report data
- Minute taking
- Supporting the organising of an event
- Audio transcription

---

## Progression Opportunities

Leavers go into paid employment in office environments, taking on a variety of roles. Students have gone on to work in local authorities, charities, retail, estate agents, schools, and hotel receptions.





# Business Studies

---

## Course Breakdown

### Qualification Level:

BTEC Introductory Course

OCR Level 2 Certificate/Extended Certificate

OCR Level 3 Certificate/Extended Certificate

The Level 3 qualification is modular and completed in units that make up full qualifications:

- Certificate (2 units)
- Extended Certificate (5 units)

### Duration of programme:

1-3 years

### Entry Requirements:

To study Level 3, you will require 4 GCSEs at grade C (grade 4) or above, or a Level 2 Business or related qualification at Level 2, plus a desire to learn more about the business world and working in it.

## Course Information

The Level 3 course is assessed through both examined and internally assessed units. There is a focus on both theory and practical work to enable you to understand a range of businesses, and work effectively in a business environment.

Current units include:

- The Business Environment
- Working in Business
- Business Decisions
- Customers and Communication
- Marketing and Market Research
- Accounting Concepts
- Principles of Project Management
- Responsible Business Practices
- Business Events

---

## Progression Opportunities

Many students go onto Higher Education to complete degrees with a business and/or management element. Recent degree courses by RNC alumni include Business and Law, Business and Management, Business and Chinese, Event Management, Travel and Tourism, and Business and Management (HR).

Other students go directly into employment or self-employment. There are many potential employment fields, with progression pathways of former students often beginning at graduate trainee level and moving on to roles such as Finance Officer, Equalities and Diversity Manager, HR Assistant or HR Manager, and Director of own company.

# Cisco Networking Academy

---

## Course Breakdown

### Qualification Level:

Introductory Level

### Duration of programme:

1 year maximum per course

### Entry Requirements:

The Cisco Essentials courses are generally offered to students who are undertaking a BTEC Level 3 National in Information Technology

---

## Progression Opportunities

The Cisco Essentials courses cover the skills needed for entry level IT jobs such as the opportunity to continue to an IT apprenticeship with support of other suitable qualifications.

## Course Information

You will work through a series of topics, each with online and teacher-based learning, revision quizzes, hands-on tasks and topic assessments to gauge and reinforce understanding of topic. On completion of the course you will undertake a final multi-choice assessment. With a successful outcome you will gain your certificate.

### Cisco IT Essentials

You will develop knowledge in:

- PC Assembly
- Computer Hardware
- Preventive Maintenance and Troubleshooting
- Networking Concepts
- Laptops and Other Mobile Devices
- Cloud Computing
- Windows Installation and Configuration
- Mobile and Associated Operating Systems

### Cisco Cybersecurity Essentials

You will develop knowledge in:

- Networks in Our Daily Lives
- Communicating on a Local Network
- Network Addressing
- Network Security

### Cisco Networking Essentials

You will develop knowledge in:

- Cybersecurity Threats, Vulnerabilities and Attacks
- Protecting Secrets
- Ensuring Integrity
- The Five Nines Concept
- Protecting a Cybersecurity Domain

# English

---

## Course Breakdown

### Qualification Level:

GCSE English Language (Level 2)  
AS Level English Literature (Level 3)  
A Level English Literature (Level 3)

### Duration of programme:

1-2 years for GCSE  
1 year for AS Level  
2 years for A Level

### Entry Requirements:

For GCSE, a grade D (grade 3) in English is preferable, together with an internal assessment that shows that you are working at the appropriate level.

For AS and A Level, 5 GCSEs (or equivalent) at grade C (grade 4) or above are normally required; these should include Mathematics and English Language.

## Course Information

GCSE is entirely assessed by examination. There is a speaking and listening component which, although compulsory, does not contribute to the final grade. You will study a range of texts of different types and genres, but the examination is entirely skills-based there are no 'set texts' that you have to answer questions on.

The main subject for AS and Year 1 of A Level English Literature will be 'Love Through the Ages', covering Shakespeare, poetry and prose.

The main topic for Year 2 of A Level will be 'World War One and its Aftermath', exploring literature arising out of the Great War, and extending this period to allow reflection on the full impact of the war that reverberates up to the present day. The A Level also includes a coursework element which gives you a wide choice of texts to write a comparative critical study across a theme of your choice.


---

## Progression Opportunities

The GCSE qualification is a gateway to employment and to further academic study. Most universities will insist on a grade C in GCSE English.

After studying A Level English Literature, most students go on to Higher Education. A Level English Literature is highly valued by universities and can enable entry onto a range of subjects. Careers include researcher, digital copywriter, journalist and school teacher.





Nicole organised a sponsored walk for her EPQ. This involved recruiting staff and students to walk an accumulated 500 miles.

She planned the route, set up fundraising tools and mileage trackers and organised groups to ensure Covid safety. Nicole also had to promote the event and she is shown here being interviewed by Nicola Goodwin of BBC Hereford & Worcester.

# Extended Project (EPQ)

---

## Course Breakdown

### Qualification Level:

50% of an A Level (Level 3)

### Duration of programme:

Two Terms: Practical work is usually completed by the end of the spring term (before Easter).

### Entry Requirements:

Appropriate IT skills and (usually) previous successful experience on a Level 3 programme. Most students undertake this course in their second or third year.

## Course Information

There is a taught element at the start of the course which covers project management and relevant study skills, after which you will choose a topic, task and title. The task may be a dissertation, a report or investigation, the production of an artefact or a creative production.

As well as completing the task to the best of your ability, you will give a formal presentation on your project and present a portfolio of evidence which demonstrates the skills you have developed in planning, research, decision making, evaluation and review.

---

## Progression Opportunities

Extended Project is valued by employers and most universities. Talking or writing effectively about the project provides 'stand out from the crowd' material which may improve a personal statement related to a job or university application.

The Level 3 Extended Project is equivalent to half of a full A Level. Under the new UCAS tariff this means that it carries more points than an AS (which is only 40% of a full A Level).

It is a helpful qualification for future entrepreneurs and business owners.



# Health and Social Care

---

## Course Breakdown

### Qualification Level:

GCSE (Level 2)

OCR Level 3 Cambridge Technical Certificate/  
Extended Certificate

### Duration of programme:

1-2 years for GCSE

1 year for Certificate

2 years for Extended Certificate

### Entry Requirements:

To study Level 3 you must have GCSE English Language, GCSE Mathematics and at least two other GCSEs at grade C (grade 4), preferably including Science. Functional Skills Level 2 will be considered. It would be advantageous to have completed an OCR Level 2 Cambridge Technical in Health and Social Care or an OCR Level 1 or 2 Cambridge National in Health and Social Care.

## Course Information

The Level 3 Certificate is an Applied General qualification which means it is equivalent to half an A Level. The course will give you an introduction to the health and social care sector and can support other vocational and academic qualifications. You will study three mandatory units:

- Building Positive Relationships in Health and Social Care (coursework)
- Equality, Diversity and Rights in Health and Social Care (examination)
- Health, Safety and Security in Health and Social Care (examination)

The Extended Certificate is equivalent to a full A Level and in addition to the above three units you will study:

- Anatomy and Physiology for Health and Social Care (examination)
- Nutrition for Health (coursework)
- Infection Control (coursework)

---

## Progression Opportunities

To achieve the full A Level equivalent, students who successfully complete the Certificate course will be given the opportunity to progress to Level 3 Cambridge Technical Extended Certificate in Health and Social Care. This qualification will provide you with the skills, knowledge and understanding to progress into Higher Education on a health and social care-related programme such as Health and Social Care, Nursing, Social Work or Early Childhood Studies.



# History

---

## Course Breakdown

### Qualification Level:

AS Level (Level 3)

A Level (Level 3)

### Duration of programme:

1 year for AS Level

2 years for A Level

AS and A Level are separate qualifications but are taught alongside each other for the first year. This gives AS students the opportunity to switch to the full A Level if they are ready.

### Entry Requirements:

For AS and A Level History, 5 GCSEs (or equivalent) at grade C (grade 4) or above are normally required; these should include English, Mathematics and History. You will only be able to join us for the second year of A Level if you have studied AS units which are identical to the ones we offer.

## Course Information

Studying History will help you understand the significance of historical events, the role of individuals in history and the nature of change over time. The course covers two engaging periods of history. British History delves into The Tudors, while non-British History takes you through Democracy and Nazism: Germany 1918-1945. These units carry across both AS and the second year of A Level.

At the end of the AS year, if you are continuing with the full A Level, you will get teacher support and advice from the examination board on identifying a topic that you can research and study independently.

---

## Progression Opportunities

After studying A Level History students may go on to Higher Education to study degrees in History or other humanities subjects, or you may choose from a wide range of other disciplines including Journalism, Politics, International Relations, American Studies, Sociology and Anthropology.

Studying History provides a wide range of employment opportunities. Future careers may include work in museums and libraries, law or the civil service, or as a researcher or political assistant to an MP.

# Home Cooking Skills

---

## Course Breakdown

### Qualification Level:

BTEC Level 1 Award (one unit with a value of four credits)

BTEC Level 2 Award (one unit with a value of six credits)

### Duration of programme:

7-8 months (approximately two terms).

### Entry Requirements:

An ability to carry out a range of basic food preparation and cooking tasks. These skills are usually established on the Independent Living Skills programme undertaken during your first year at RNC.

## Course Information

The Level 1 and Level 2 Awards in the Home Cooking Skills course have been designed to give you the opportunity to develop:

- the knowledge, understanding and confidence to cook meals at home.
- an understanding of how to economise when cooking a meal.
- an ability to transfer skills to different recipes.
- a capacity to inspire others by transferring that knowledge.
- understanding of safe food handling and hygiene practices that are relevant to catering.

Usually undertaken in your second and/or third year, the course is delivered in our teaching kitchen, which allows you to work individually in your own kitchen bay under the supervision of specialist teaching staff.

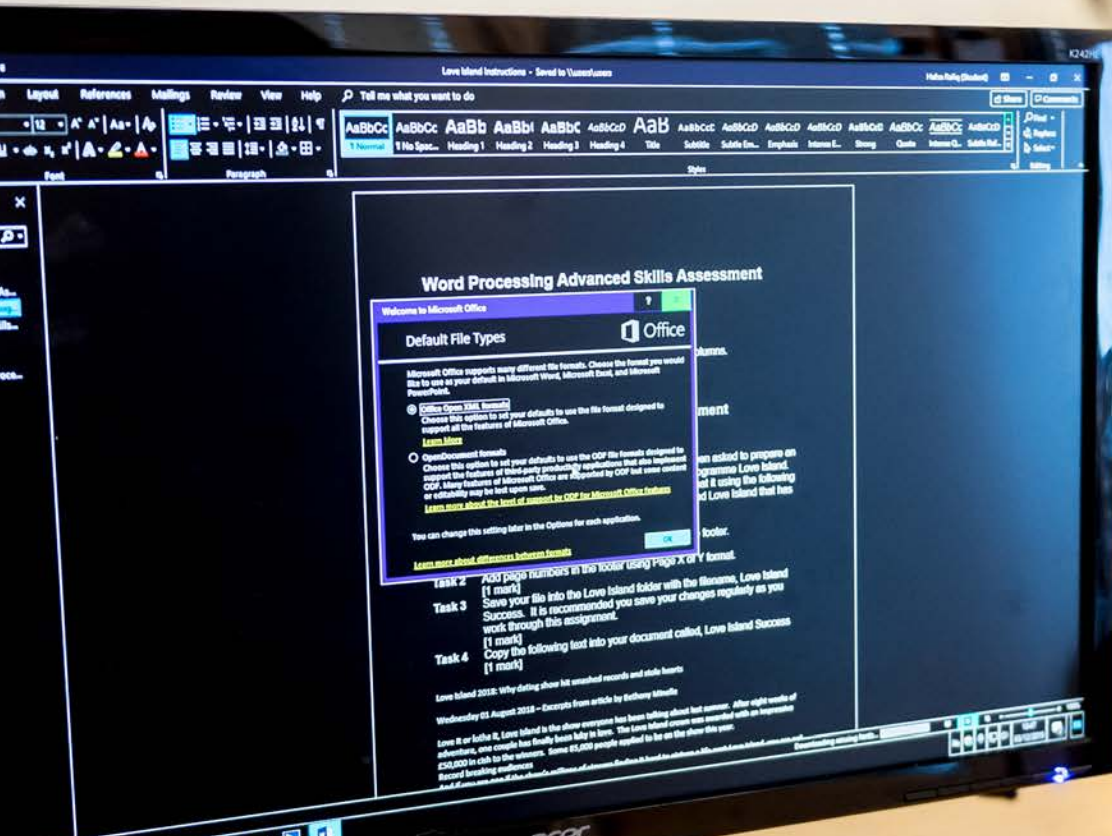
---

## Progression Opportunities

In discussion with staff, you may progress to self-catering status at College and you will be able to cook economically and healthily for friends and family when you leave RNC. This can be of real benefit if planning to live independently or for going into halls of residence at university.







# IT - Information Technology

---

## Course Breakdown

### Qualification Level:

OCR Level 2 Cambridge Technical Certificate in Information Technology - Digital Administrator

BTEC Level 3 National in Information Technology (Certificate/Extended Certificate/Foundation Diploma/Diploma/Extended Diploma)

### Duration of programme:

1 year (Level 2)

1-3 years (Level 3)

### Entry Requirements:

Level 2

You will be working towards Level 1/Level 2 in Mathematics and English and have an interest in IT.

Level 3

You will have 5 GCSEs at grade C (grade 4) or above, including Mathematics and English.

## Course Information

For all levels, unit results are graded as Pass, Merit, or Distinction.

At Level 2, a mixture of practical assignments and on-screen tests will include: exploring current and emerging technologies, security protection and risk management, and using data analysis software.

Level 3 offers a mixture of mandatory and optional units. Some units are examination based and others are assignment based. You get to develop skills in various IT applications and design, implement and test systems using a variety of software and programming platforms.

---

## Progression Opportunities

Level 2 students may continue on to the Level 3 course or progress to an IT apprenticeship.

The Level 3 course provides an excellent start to a career or advanced level apprenticeship in the Information Technology sector, in roles such as support technician, service analyst, software developer and accessibility officer.

Level 3 students may also go on to Higher Education to complete degrees in IT or a related discipline, such as Computer Science, Software Engineer, Cybersecurity, Digital Marketing, etc.



# Massage and Complementary Therapies

---

## Course Breakdown

### Qualification Level:

ITEC Level 3

### Duration of programme:

1-3 years

### Entry Requirements:

There are no formal entry requirements, although a minimum of a Level 2 qualification would be expected for this course. An interest in people, your own health and personal growth are essential, along with self-motivation, good communication skills, a caring nature and a good level of fitness. Good basic computer skills are needed for this course.

There will be an internal assessment to ensure that you are working at the appropriate level for this course and your individual circumstances can be discussed at your Pre-Entry Assessment.

## Course Information

Mandatory units are:

- Anatomy and Physiology
- Holistic Massage
- Business

There are also optional disciplines which you can choose to study depending on your abilities and interests:

- Aromatherapy
- Sports Massage
- Reflexology
- Indian Head Massage
- On-site Chair Massage

You will have weekly practical experience, providing massages to members of the public during open clinics and sessions by appointment.

You will also have the opportunity to attend events to gain experience of massaging a range of people. These may include running and cycling races, pamper days for the community and corporate clinics. Working with various charities, notably those for people with different conditions, provides you with a range of learning experiences to develop transferable skills.

---

## Progression Opportunities

Many of our students go into employment, working in health spas and fitness centres. Self-employment as a massage therapist is a popular career path, which includes building a client base, utilising business skills for self-promotion, and gaining membership of a professional body.





# Mathematics

---

## Course Breakdown

### Qualification Level:

Award in Number and Measure (Level 2)  
GCSE (Level 2)  
AS Level (Level 3)  
A Level (Level 3)

### Duration of programme:

1 year for GCSE and Level 2 courses  
1 year for AS Level  
2 years for A Level

The AS and A Level are separate qualifications but are taught alongside each other for the first year. This gives AS students the opportunity to switch to the full A Level if they are ready.

### Entry Requirements:

For GCSE, a grade 3 in GCSE Mathematics is preferable, together with an internal assessment that shows you are working at the appropriate level. For AS and A Level, GCSE Mathematics at grade 7 or above is normally required, together with four other GCSEs (or equivalent) at grade 4 or above; these should include English Language. There will also be an internal assessment to ensure that you are working at the appropriate level. If you have a grade 6 at GCSE and want to study AS/A Level Mathematics you will be advised on an individual basis.

## Course Information

GCSE Mathematics covers data handling, number and algebra, shape and space. AS and A Level Mathematics are traditional mathematics courses which build on your understanding of higher-tier GCSE concepts. You will study both pure and applied mathematics including mechanics and statistics. Pure mathematics covers topics such as algebra and geometry; applied mathematics explores how mathematics can be used to solve real-world problems.

---

## Progression Opportunities

A GCSE qualification is a gateway to employment and to further academic study. Most universities will insist on a grade 5 in GCSE Mathematics.

After studying A Level Mathematics, most students go on to Higher Education. Mathematics is often considered as the 'Queen of the Sciences' and is highly favoured by universities, particularly in relation to any science-based subject; many top universities require it for degrees in Computing and IT.

There are many openings for mathematicians in industry and services. Potential career paths include: actuarial science, business analyst, software engineer, technology analyst, information engineer, speech technology researcher and data scientist.

# Modern Foreign Languages

## Course Breakdown

### Qualification Level:

ABC Entry Level Award (Entry 2)  
 ABC Entry Level Award (Entry 3)  
 ABC Level 1 Award (Level 1)  
 GCSE (Level 2)  
 AS Level (Level 3)  
 A Level (Level 3)  
 ABC Level 3 Award (Entry 3)

### Duration of programme:

1-2 years for ABC (Entry Level)  
 1-2 years for ABC (Level 1)  
 1-2 years for GCSE  
 1 year for AS Level  
 2 years for A Level  
 1-2 years for ABC (Level 3)  
 AS and A Level are separate qualifications but are taught alongside each other for the first year. This gives AS students the opportunity to switch to the full A Level if they are ready.

## Progression Opportunities

Having a foreign language gives you a big advantage when it comes to applying for jobs. Many companies now say that they prefer staff to be able to speak more than one language. The language skills you learn at RNC will equip you to work in a range of professional workplaces. Language A Levels will also prepare you for Higher Education if you choose to continue your studies at university.

## Course Information

Offering three options (French, German and Spanish), the Modern Foreign Languages courses follow the same syllabus and offer the same chance to excel in your chosen language (or languages).

GCSE broadens your existing knowledge of the language and culture.

The AS and A Level syllabuses include culture, current affairs and ethical issues such as immigration, crime, politics and religious beliefs, as well as developing your language skills. You will also study film in AS Level, and both film and literature at A Level, giving you an insight into the culture of your chosen language. For example, in German, AS Level students have studied Dennis Gansel's hit film 'Die Welle', which proved thought-provoking.

The ABC Level 3 is a portfolio qualification focusing on your chosen language in work settings. You will learn how to complete practical office tasks in that language. In French, your work will link to that of our partner college in Lyon, as part of the Erasmus+ project GROWTH-4-VIP.

## Overseas Partnerships

With our partner, Cité Scolaire René Pellet in Villeurbanne, Lyon, annual exchange visits to France are organised and places on the trip are prioritised for language students. The exchanges offer you the chance to explore a new culture as well as practising the language. Students often stay in contact with their French peers via email and social media.

We have links with Nikolauspflge school in Stuttgart. We organise biennial trips to Germany, offering you the chance to explore new cultures and practise your German language skills. Places on the trip are prioritised for language students and are much enjoyed by students on both sides of the partnership.



RNC is developing a partnership with ONCE (Organización Nacional de Ciegos Españoles), who have bases in the Spanish cities of Madrid, Barcelona, Malaga, Santander and Pontevedra. You may also have the opportunity to visit Galicia, with the chance to explore a new culture as well as practising your Spanish language skills.

# Preparation for Higher Education

---

## Course Breakdown

### Qualification Level:

Level 3

### Duration of programme:

1 year

### Entry Requirements:

Level 3 qualifications for those planning to go on to university.

## Course Information

If you have achieved Level 3 qualifications but require further support to be independent and successful in the next step of your life, this one-year course will equip you with the knowledge, skills and confidence to address the needs of independent study and independent living on your transition to Higher Education.

You will be provided with a personalised programme to meet your specific individual needs. Here is an example of what your programme could look like:

- Level 3 Extended Project Qualification
- Further Level 3/A Level subject of choice
- Work placement related to proposed career pathway
- IT Skills
- Independent Living Skills
- Mobility
- Higher Education support
- Career development and transition support
- Tutorial
- Extracurricular activities

The programme will not only provide knowledge and skills at a suitable level but also further Level 3 qualifications and UCAS points to enhance the opportunities of progression on to a wide range of universities.

Support will be provided with the research of appropriate degree courses and Higher Education establishments as well as the completion of your UCAS application.

---

## Progression Opportunities

By the end of your placement, you will have achieved a level of independence in Mobility and Independent Living Skills appropriate to your ambitions, age and future plans for adult life, and be able to transfer these skills to less structured and unfamiliar environments in preparation for transition to Higher Education.

# Psychology

---

## Course Breakdown

### Qualification Level:

AS Level (Level 3)

A Level (Level 3)

### Duration of programme:

1 year for AS Level

2 years for A Level

The AS and A Level are separate qualifications but taught alongside each other for the first year. This gives AS students the opportunity to switch to the full A Level if they are ready.

### Entry Requirements:

Five GCSEs (or equivalent) at grade C (grade 4) or above are normally required; these should include Mathematics and English Language.

## Course Information

The Psychology syllabus provides a stimulating and fascinating mix of subject areas. You will learn to develop skills that are valued by both Higher Education and employers, including critical analysis, independent thinking and research.

AS Level modules include:

- Approaches in Psychology
- Social Influence
- Biopsychology
- Research Methods

A2 modules include all of the AS modules, plus:

- Cognition and Development
  - Forensic Psychology
  - Issues and Debates in Psychology
- 

## Progression Opportunities

Most A Level students go on to Higher Education, often studying Psychology or other social sciences and humanities subjects.

Psychology can lead to a career in research (through a Masters or PhD), or as an Educational Psychologist or teacher. Other career choices may include counselling, occupational therapy or social care work.

# Sociology

---

## Course Breakdown

### Qualification Level:

AS Level (Level 3)  
A Level (Level 3)

### Duration of programme:

1 year for AS Level  
2 years for A Level

AS and A Level are separate qualifications but are taught alongside each other for the first year. This gives AS students the opportunity to switch to the full A Level if they are ready.

### Entry Requirements:

You should have 5 GCSEs (or equivalent) at grade C (grade 4) or above; these should include English Language and Mathematics, although exceptions can be made depending on individual circumstances.

## Course Information

Sociology develops a range of key skills, such as presenting a rational argument on an emotive topic and applying complex theories to everyday life. You will be able to place UK society within its global context as well as understand the significance of conflict and consensus, social structure and social action, and the role of values.

AS and A Level Year 1 modules include:

- Sociology of Education
- Sociology of Families and Households
- Research Methods

In Year 2 (A Level only), you will study:

- Sociology of Crime and Deviance
  - Sociology of Beliefs in Society
  - Sociological Theory and Research Methods
- 

## Progression Opportunities

Many students will go on to study degrees such as Sociology, Criminology, Politics, Philosophy and Ethics, Media Studies, and Journalism. Depending on the combination with other A Levels, others go on to study Psychology or Counselling.

The understanding Sociology gives about the workings of society, including demographics and social injustice, often leads people to careers in social and caring professions. Jobs such as journalism, social work, counselling, and teaching are all possible future directions.



## Progression Opportunities

Successful students have gone on to represent their country in their chosen sport, for example Goalball and Blind Football, with some achieving a professional career.





# Sports Academy

---

## Course Breakdown

### Duration of programme:

1-3 years

The UK's first VI Sports Academy is designed to meet the needs of students who have aspirations to progress in their chosen sport. Sessions are flexible to fit in alongside your individualised academic/vocational timetable. You will receive between one and ten hours of Sports Academy sessions per week, depending on your timetable and mixture of lessons and sports.

### Entry Requirements:

There are no formal entry requirements. Previous playing experience is preferable but this depends on the individual, the chosen sport and the chosen level. This can be discussed at your Pre-Entry Assessment. Enthusiasm and willingness to learn are essential for anyone wanting to join the RNC Sports Academy. There are recreational opportunities to play, both internally at RNC and at weekend tournaments, for novice players who may not have played sport before.

## Course Information

The main sports we offer are Goalball, Football, Judo and Golf. We also deliver a range of other sports including Boccia, Tennis and Gymnastics, depending on individual requirements.

For full RNC Sports Academy members, we tailor sport-specific programmes and will encourage you to train like a professional athlete. As well as practice in your chosen sport, your timetable will include strength and conditioning plus sessions on nutrition, lifestyle, and injury and rehabilitation management.

We have also had students undertaking different disciplines, including Skiing, Athletics, Swimming and Climbing. Our sports coaches provide support for personal development to complement your training and will link you up with local sports clubs in order for you to access your specific sport.

The RNC Sports Academy works alongside a number of key partners in disability sport including The FA (Football Association), Goalball UK, British Judo Association and BBS (British Blind Sport). These links have been instrumental in our success, allowing unique access for our students to train alongside other elite athletes and by working closely with national team coaches.

We have a number of Sport England's TASS (Talented Athletes Scholarship Scheme) students, nominated by their national governing bodies, and are proud to be the only Further Education college to have achieved TDS (TASS delivery site) status. The Scheme helps athletes in education to get the best from their sporting and academic careers, focusing on five key elements which include nutrition and strength and conditioning sessions.

More information on TASS can be found at [www.tass.gov.uk](http://www.tass.gov.uk)



# Diploma in Sporting Excellence (DiSE)

---

## Course Breakdown

### Qualification Level:

Level 3 Diploma in Sporting Excellence and Performance

### Duration of programme:

1-3 years. The Sports Academy is accessible to every RNC student, Sports Academy sessions are flexible to fit alongside your individualised academic/vocational timetable. Students can receive between one and 10 hours of Sports Academy sessions per week, depending on the individual student.

### Entry Requirements:

The most important thing you need in order to undertake this qualification is an enquiring mind, an interest in the sport and leisure industry, a willingness to explore new ideas and an ability to communicate your ideas effectively.

It is not a requirement for you to have previously completed a sport-specific qualification, but it would be appropriate for you to have previously demonstrated the ability to effectively manage and work at Level 3.

This qualification is intended for students who are training with, or affiliated to, a recognised National Governing Body (NGB) and/or have contract links with professional sports bodies, where the programme of study involves performance in regular organised competitive sport, with the intended purpose of progression to employment as an elite performer, or in elite performance.

## Course Information

This course has been developed in consultation with employers and professional bodies. The units provide the underpinning knowledge, skills and behaviours needed for working in the sports industry.

You will undertake a personal audit after developing your understanding of the structure of the industry and of the wide range of organisations within it.

You will explore positive and negative lifestyle factors that affect health and wellbeing.

You will investigate the technical, tactical, physiological and psychological requirements of performing at the highest level.

You will undertake a performance analysis while investigating the coping and management strategies required for engaging with top-level sport.

This will allow you to actively develop and hone both the skills and behaviours required for working in the performance environment.

---

## Progression Opportunities

This qualification is aimed primarily at those wishing to pursue a career as a professional sports performer. It may also be suitable for a performer whose second career choice is to work in the performance sport industry.

When combined with other qualifications in a two-year, full-time study programme, you can progress to Higher Education degree programmes, such as a BSc(Hons) in Sport Performance Analysis and a BA(Hons) in Sports Studies.



# Sport and Recreation

---

## Course Breakdown

### Qualification Level:

Active IQ Entry Level 1 Award in the Principles of Health and Fitness

Active IQ Entry Level 1 Award in Active Healthy Living

Active IQ Level 1 Award in Fitness and Physical Activity

Active IQ Level 2 Award in Instructing Kettlebells

Active IQ Level 2 Award in Studio Cycling

Active IQ Level 2 Award in Instructing Suspended Movement Training

Active IQ Level 2 Certificate in Gym Instructing

Active IQ Level 3 Diploma in Personal Training

Active IQ Level 3 Award in Instructing Outdoor Fitness

### Duration:

1-3 years depending on the course.

### Entry Requirements:

At a minimum, you will have an interest in fitness and health. Some experience within the industry would be an advantage.

For Level 2 and Level 3, you will also have GCSE English at grades D–F (grades 3–2), or possess Level 1 Key Skills Literacy, Numeracy and Communication.

## Course Information

As a Sport and Recreation student you will gain real experience of running the student gym and have responsibilities that will include meeting and greeting clients, setting up and taking down fitness classes, structuring a fitness session, components of warming up and cooling down, programme designing, and cleaning and maintenance.

During term time, you will take part in running classes for the public as part of thePoint4's group exercise programme. These exercise classes run two evenings a week and focus on different styles of workouts.

For full details on our Active IQ courses, please visit: [www.rnc.ac.uk/gymbasedqualifications](http://www.rnc.ac.uk/gymbasedqualifications)

---

## Progression Opportunities

All Active IQ Level 1 qualifications can lead to further study at Level 2.

On completion of Level 2 and Level 3 qualifications you may decide to seek work within the industry, progress on to a higher level sports programme or combine with compatible qualifications such as fitness instructor, personal trainer or sports massage.

# Get in Touch

You will have lots of questions but please don't be afraid to get in touch; we are here to help you.

For further information, please contact our Student Enquiries team on 01432 376 621, email [info@rnc.ac.uk](mailto:info@rnc.ac.uk) or visit our website at [www.rnc.ac.uk](http://www.rnc.ac.uk)

**We also have active social media channels:**

 /RNCHereford

 @RNC\_Hereford

 RNCHereford

Situated in the West Midlands and just 15 miles from the border with Wales, you will find us at:

The Royal National College for the Blind  
Venns Lane  
Hereford  
HR1 1DT

## EQUALITY, DIVERSITY & INCLUSION

RNC welcomes a diverse population of students and staff. We aim to ensure that our college environment is free from prejudice and harassment. In all aspects of delivery and employment, no individual or group will be discriminated against on the grounds of gender, marital status, gender reassignment, age, disability, race, religion and belief or sexual orientation.

In 2015, RNC was recognised with an Investors in Diversity award.

In 2016, we ranked 6th in the Top 100 organisations for best EDI practice at the National Centre for Diversity Grand Awards and named Specialist College of the Year.

For further information on our policies on Equal Opportunities and Diversity, please contact us or visit our website: [www.rnc.ac.uk](http://www.rnc.ac.uk)

This prospectus is available in other formats: Braille, large print and audio.

Please contact our Student Enquiries line on 01432 376 621

The information provided is correct at the time of going to print

RNC Copyright 2021



The Royal National College for the Blind  
Venns Lane  
Hereford  
HR1 1DT

Tel: 01432 376 621  
Email: [info@rnc.ac.uk](mailto:info@rnc.ac.uk)  
Web: [www.rnc.ac.uk](http://www.rnc.ac.uk)

Company Limited by  
Guarantee No. 2367626

Registered Charity No. 1000388